

SERIES: **"FALCON"**

MODELS: F400 DELUXE, F400 SPORT,
F450 DELUXE, F450 SPORT,
F500 DELUXE, F500 SPORT

Design category (94/25/EC): C

ISO6185-3: Category VII

User's manual

PURPOSE

The inflatable motor boat of the "FALCON" Rider series relates to the category of pleasure boats and is intended for water sports, hunting and fishing, tourism, the use as a floating means on board of launches, yachts and other vessels. Every model has three versions: Base version (F400, F450, F500), DELUXE version (F400L, F450L, F500L) and SPORT version (F400S, F450S, F500S).

TECHNICAL SPECIFICATIONS

Model Parameter	Unit of measure	F400L (DELUXE)	F400S (SPORT)	F450L (DELUXE)	F450S (SPORT)	F500L (DELUXE)	F500S (SPORT)
Length	m	3.93	3.93	4.45	4.45	5.00	5.00
Width	m	1.93	1.93	1.95	1.95	2.15	2.15
Board height	m	0.48	0.48	0.50	0.50	0.5	0.5
Number of air chambers	pcs	4	4	4	4	5	5
Carrying capacity	kg	618	618	713	713	853	853
Passengers capacity	men	6	6	7	7	9	9
Max. engine power	HP	50	50	60	60	75	75
Max. engine weight	kg	112	112	112	112	172	172
Nominal pressure	BAR	0.15	0.15	0.15	0.15	0.15	0.15
Number of packages	pcs	3	2	3	2	3	2
Package dimensions	m	3.4x1.3x0.77		3.76x1.3x0.77		4.46x1.59x0.73	
		0.63x0.61x1.13 0.85x0.45x0.61	1.28x0.48x0.76	0.9x0.61x1.03 0.85x0.45x0.61	1.58x0.52x1.03	1.02x0.6x0.9 0.85x0.45x0.61	1.58x0.52x1.03
Weight of empty boat	kg	151	141	174	166	233	225
Weight of boat with fuel and MAX engine	kg	316	306	339	331	458	450

Attention! The recommended length of remote control cables for DELUXE and SPORT version boats is specified in following table:

	Unit of measure	F400L	F400S	F450L	F450S	F500L	F500S
The recommended length of remote control cables	ft.	9	10	9	10	10	12
	m	2.74	3.05	2.74	3.05	3.05	3.67

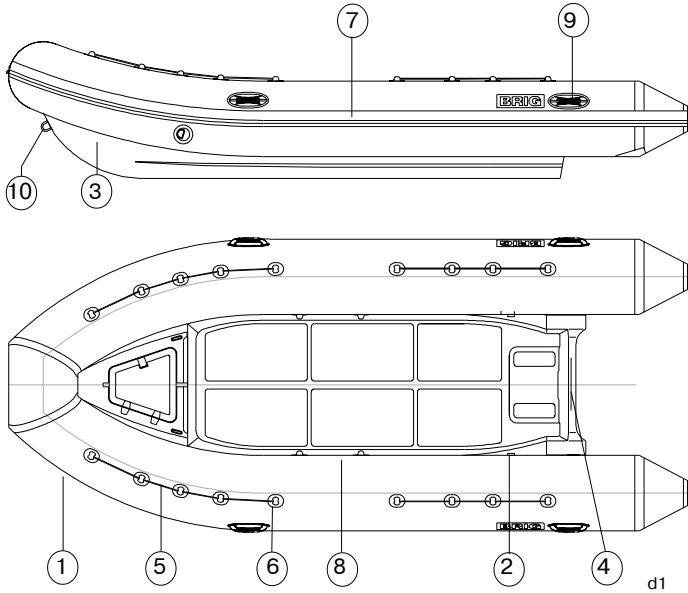
COMPLETE SET

Nb	Model	Unit of measure	F400L	F400S	F450L	F450S	F500L	F500S
Package No1								
1.	Inflatable boat	pcs	1	1	1	1	1	1
2.	Foot pump	pcs	1	1	1	1	1	1
3.	Paddle	pcs	2	2	2	2	2	2
4.	Set of spare parts and repair kit:							
	-mooring line	m	12	12	15	15	15	15
	-coated fabric for repair	m ²	0.01	0.01	0.01	0.01	0.01	0.01
	-glue set for repair	set	1	1	1	1	1	1
5.	Kit bag	pcs	1	1	1	1	1	1
6.	User's manual	pcs	1	1	1	1	1	1
Package No2 (carton)								
1.	"SPORT" console	pcs	-	1	-	1	-	1
	"DELUXE" console	pcs	1	-	1	-	1	-
2.	Bolt M8x25	pcs	4	4	4	4	4	4
3.	Washer 8	pcs	4	4	4	4	4	4
Package No3 (carton)								
1.	Double seat with stowage	pcs	1	-	1	-	1	-
2.	Bolt M8x25	pcs	4	-	4	-	4	-
3.	Washer 8	pcs	4	-	4	-	4	-
Optional equipment, they should be ordered separately								
Package No1								
1.	Stainless steel arc	pcs	1	1	1	1	1	1
·	Bolt M8x25 (have been installed on the boat)	pcs	2	2	2	2	2	2
·	Washer 8 (have been installed on the boat)	pcs	2	2	2	2	2	2
·	Bolt M6x40	pcs	4	4	4	4	4	4
·	Washer 6x24	pcs	4	4	4	4	4	4
·	Self-locking nut M6	pcs	4	4	4	4	4	4
2.	Front locker removable cushion	pcs	1	1	1	1	1	1
3.	Soft cushion of bow SUN DECK	pcs	1	-	1	-	1	-
·	Section of bow SUN DECK plywood base	pcs	1	-	1	-	1	-

Note. Perfection of the design and improvement of quality of our products is the fundamental production policy of our company. Therefore, alternations may be made to the complete set (and as the components become available).

DESIGN

Boat General View

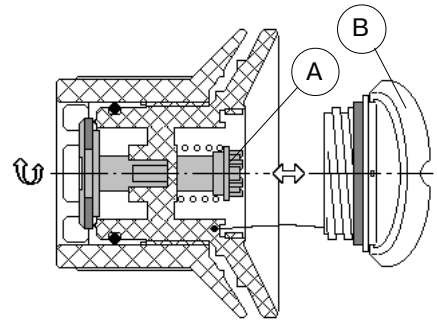


Base version (F400, F450, F500)

- ① Inflatable balloon
- ② Balloon check valve (4 pcs/5 pcs***)
- ③ Rigid bottom with transom
- ④ Outboard engine mounting seat
- ⑤ Lifeline
- ⑥ Lifeline holder (16 pcs./18 pcs./22 pcs.***)
- ⑦ Rubbing strake
- ⑧ Paddle stowage (4 pcs)
- ⑨ Carrying handle (4 pcs/6 pcs***)
- ⑩ Towing bow eye (3 pcs)

- * — F400
- ** — F450
- *** — F500

Inflation/deflation valve



The valve has two positions of sliding part A corresponding to its two conditions (modes):

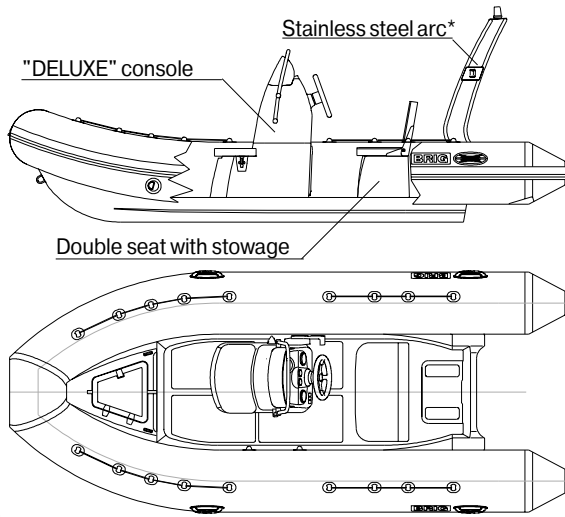
- sliding part A is withdrawn - operation condition of the valve (compartment air filling mode);
- sliding part A is recessed - valve in condition "OPEN" (compartment air discharge mode).

In order to switch the valve over from one condition to another, just press sliding part A with your finger to turn it by 90 degrees in any direction until it is fixed.

Prior to begin the compartment filling process set all valves in the operating condition. On completion of filling close the valves with bonnets B (rotate them clockwise).

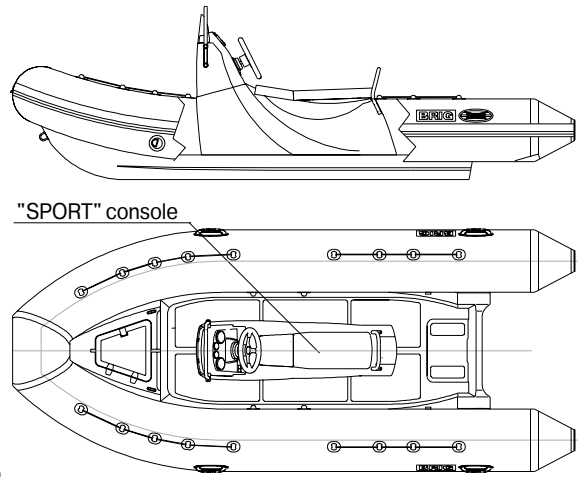
In order to discharge air from the compartments, open the valves (by counterclockwise rotation) and switch the valves over into condition "OPEN".

*"DELUXE" version (F400L, F450L, F500L)**



d3

"SPORT" version (F400S, F450S, F500S)



d4

* - Stainless steel arc is an optional equipment and it should be ordered separately

PREPARATION FOR EXPLOITATION

In order to set the boat in the operation condition perform as follows:

Unfold the inflatable balloon.

Set all valves in operating condition (see above).

*For models **F400L**, **F450L** and **F500L**:*

1 Assemble the DELUXE console as described in console user's manual (see package No.2) or according to appendix A of this manual.

4 Install steering wheel on DELUXE console.

Required tools - screwdriver.

3 Install the console onto the boat.

Required tools - wrench S14.

●Put the console on the deck. Fix the console to the deck with the help of bolts M8x25 and washers from the console kit. Tighten all bolts by means of the wrench.

●Install the steering system cable in accordance with its own installation instruction (manual) and user's manual of your outboard engine.

4 Install the stowage with the seat on the boat deck, using the tool: wrench S14 and bolts M8x25 (with washers) from the stowage kit.

*For model **F400S**:*

1 Assemble the "SPORT" console as described in SPORT console user's manual (see package No.2) or according to appendix C of this manual.

2 Install the "SPORT" console into the boat.

Required tools - wrench S14.

●Set the console to the fittings of the deck. Fix the console to the deck fittings with bolts M8x25 and washers from the console kit. Tighten all bolts by means of the wrench.

●Install the seat on the console (step 4 and picture 1 of SPORT console user's manual or Fig.C1 of appendix C).

●Install the steering system cable in accordance with its own installation instruction (manual) and user's manual of your outboard engine.

Free space under "SPORT" console can be used for installation of fuel tank and batteries.

*For models **F450S** and **F500S**:*

1 Assemble the "SPORT" console as described in SPORT console user's manual (see package No.2) step 1-4 or according to appendix B of this manual.

2 Install the "SPORT" console into the boat.

Required tools - wrench S14.

●Set the console to the fittings of the deck. (see step 5 of appendix B). Fix the console to the deck fittings with bolts M8x25 and washers from the console kit. Tighten all bolts by means of the wrench.

●Install the upper part and seat on the console (steps 6-7 and picture 2 of SPORT console user's manual or steps 6-7 and Fig.B1 of appendix B).

●Install the steering system cable in accordance with its own installation instruction (manual) and user's manual of your outboard engine.

Free space under "SPORT" console can be used for installation of fuel tank and batteries.

For boats with optional equipment::

1 Assemble and install stainless arc according to appendix D of this manual.

Required tools - wrench S14 and hex key wrench S5.

2 install the bow SUN DECK into the boat.

●Insert the SUN DECK plywood base into the specified recesses in the front locker and console. For this purpose open the BCF-19 console front seat. After SUN DECK base installation close the BCF-19 console front seat.

●Set the SUN DECK cushion on the press-buttons.

3 Set the front locker cushion on the press-buttons.

For all models:

Apply the foot pump to fill the afterbody of the compartments with air to the pressure being slightly below its rated value (the balloon will be

completely straightened). Then fill the forebody compartment with air up to the rated pressure.

The rated pressure value is 0.15 kgf/cm².

On completion of filling close the valves with bonnets B (rotate them clockwise), (look before).

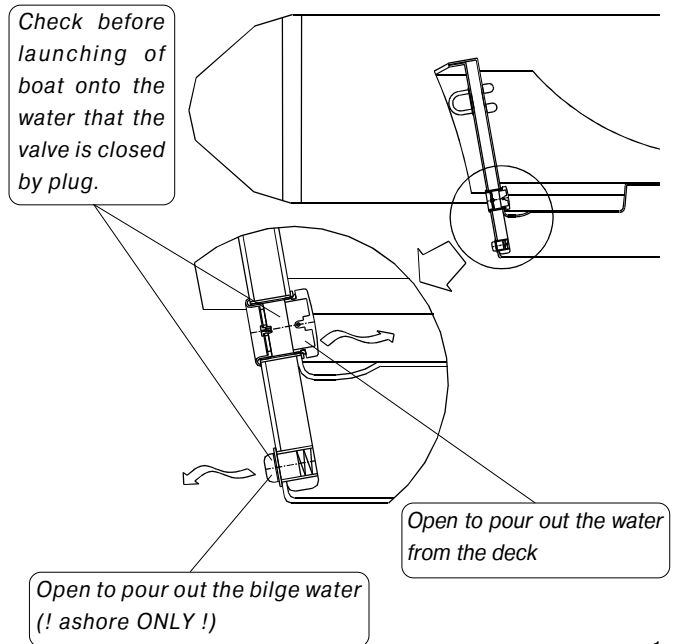
Assemble the paddles by entering the removable parts with blades into the locks until the click. Secure the oars in the holders.

When mounting the outboard engine make sure that it is reliably fixed to the transom. In addition, take every precaution to avoid any contacts of the fuel with the boat surfaces.

In order to discharge air from the compartments, open the valves (by counterclockwise rotation) and switch the valves over into condition "OPEN", (look before).

ATTENTION!

1. Boat exploitation with board pressure more than nominal decreases boat service life.
2. Board air chambers are hermetical if they keep own form during 8 hours. In this case:
 - primary pressure has to be nominal;
 - input valves openings have to be tightly closed by plugs.
3. Until sailing satisfy oneself that drain openings on a transom are closed by plugs.



MAINTENANCE

- Main conditions of long service life is right and careful servicing. Avoid excessive increasing of pressure in the board, especially from heating by the sun rays.
- After exploitation take off sand and dirt from boat surface, and carefully dry it.
- Avoid the water getting into the chambers. If a fuel or an oil gets to the boat surface it is necessary to wash the soiling place by soap water as soon as possible and dry.
- Pay attention to the condition of bottom surfaces. If it's cover is destroyed it is necessary to dry this element and restore the defend cover.
- After season prepare the boat to winter keeping. Clean boat surface from sand and dirt and make the necessary repairs, if damages take place. If it is possible, keep the boat in the open and slightly pumped state in air temperature 0-25°C. The boat must be protected from the sun rays.



ATTENTION! To prevent the damaging of inflatable tube material you have to follow the strict rule:

Storage of the boat with temperature variations from -30°C to +45°C may be allowed for not longer than 1 month. In case the boat has being stored or transported at a temperature bellow 0°C, it must be held at a temperature above +15°C for at least 1 hour before be unpacked and unfolded.

- Insignificant boat repairing (eliminating the board punctures or cuts) you may carry out by yourself. In this case use the coated fabric and the glue set for repair from the complete set. Independent performance of any complex repair associated with considerable damages to the board, partitions and seams is not recommended. In such cases, apply to your dealer.

OPERATING REGULATIONS

Dear user,

We thank your for your purchase and do hope that you will have a great fun of it. However, to make your joy and pleasure complete, we would request you to read carefully and observe the directions and recommendations specified below.

IT IS STRICTLY FORBIDDEN

to handle the boat in the state of intoxication and without individual rescue means being used (life-saving belts, jackets, etc.)

IT IS FORBIDDEN:

- to overload the boat above the design weight-carrying capacity;
- to use an outboard engine of power exceeding the maximum allowable value;
- to bring the balloon pressure up to the value exceeding the rated one(0.15 kgf/cm²);
- to drag the boat across a rough surface.

• **Danger of usage of engine having insufficient or excessive power**

According to the safety regulations, each inflatable boat should be furnished with an outboard engine having the maximum allowable power. You will find the data on the maximum allowable power of the engine on the manufacturer's plate with the designation of the model type inscribed thereon. The plate is fixed in the afterbody of the boat. However, your should choose the engine power within the allowable range so as to ensure that you may safely reach the shore when heading into the wind or into the current.

- **Observation of local shipping regulations**

For each particular water area the local shipping regulations are in force. You may apply for information to the appropriate water transport and shipping directorate, as well as to the water police.

- **Proper usage of boat equipment and accessories**

Use the boat equipment and accessories only on their direct purpose to ensure reliable service.

- **Availability of Oars**

Even when sailing with an outboard engine you should always have the oars available with you so that you were able to reach the shore without outside assistance in case of any damage to the boat.

- **Usage of emergency stop switch**

On your request any outboard engine seller may provide your engine with the emergency stop switch. During navigation the switch should be connected to the wrist of your hand by means of a cord. In case you fall overboard, even if being a steersman, the switch will cut out the engine and the propeller. This arrangement will enable you to avoid any traumas and to reach the boat.

- **Prevention of damages caused by electrolyte or fuel leakages**

Take all possible precautions against penetration of fuel or electrolyte from the storage battery into the inflatable boat. If it does happen wash thoroughly the fouled spots with water.

- **Cargo arrangement and stowing, attachment of items and prevention of falling overboard**

You should be always sure that the number of people on board never exceeds that specified in the user's manual or on the manufacturer's plate provided on the transom. The boat will retain an adequate floatability and will not keel over only provided that the load is arranged reasonably. Therefore, do not accommodate all passengers on the same side of the boat. Arrange the cargo to be carried uniformly inside the boat, all items being reliable secured on the bottom of the boat. All passengers should be accommodated inside the boat. The occupied seats should not be left throughout the entire sailing time. When sailing with an outboard engine the steersman should shift his body forward in the course of acceleration to prevent the boat forebody from raising under the force of upthrust waves.

- **Presence of sharp and pricking objects on board**

Despite the strong shell of the boat we are recommended to handle sharp and pricking objects being on board with care. For example, it concerns a knife blade, fish-hook point, etc.

- **Rocky shore, mole, shoals (for example, sand banks, coral reefs, rocks)**

Approach rocky shores, shoals, moles, etc. carefully to avoid damages to the boat. It is strictly prohibited to drag the boat across rough surfaces (shingle, rocks, concrete, etc.).

- **Check at navigation**

In case of prolonged navigation with the use of an outboard engine, regularly check to ensure that the engine is reliably attached to the boat. If the engine was attached carelessly the attachment may work loose under the action of vibration.

Besides, check air chambers pressure at regular intervals, since the

pressure may vary under the effects of outside air temperature and atmospheric pressure variations.

Never forget to monitor regularly the quantity of fuel in the fuel tank. Keep always in mind that the quantity of fuel should be sufficient for you to sail to your final destination.

- **Availability of rescue means (life-saving jackets, distress signals, spare parts)**

If you are planning to go beyond the protected water areas you should provide all passengers on board with life-saving jackets. All passengers should put on life-saving jackets under strong wind and heavy seaways conditions. Those passengers who cannot swim should always carry the life-saving jackets while on board! It is also recommended to keep constantly distress signal means on board.

- **Towing**

At towing the towing rope length should not be at least 3 lengths of the boat, the rope being secured to both boats in a manner ensuring its immediately, single-motion release. The steersman of the towed boat should be assisted by another crew member to monitor the process of towing. In this case, certain communication gestures should be agreed upon beforehand.

- **Damage to one of air chambers**

The inflatable boat is designed to provide an adequate stability in case of the complete damage to one the air chambers (balloon compartments) at the expense of the remaining air chambers and rigid bottom. Thanks to it, you will be able to reach safely the nearest shore. Reduce the speed and shift your body to the undamaged part of the boat. Watch changes in stability. After this

immediately head for the nearest shore. To prevent penetration of water into the boat, pull the shell of the damaged air chambers upwards.

- **Anchor and mooring fast fastening**

Fix the anchor and towing ropes in the forebody of the boat to the front towing ring. Fix the back spring on the transom via special holes.

- **Danger of currents and wind**

Before navigation of the boat in unfamiliar waters make detail inquiries about local conditions and regulations! Currents, wind, shoals, rising and falling tides, as well as weather variations may imply serious danger!

- **In emergency stay in boat**

In any unexpected situation (engine failure, boat damage, etc.) do not ever leave the boat provided it is still afloat. Even if you believe that the shore is just nearby stay in the boat, since you will be looked for in this particular place and, most probably, will be found. Should the boat become partially flooded throw heavy objects (batteries, fuel tank, engine) overboard to ensure additional floatability.

The "BRIG" Company employees would like to wish you a pleasant and safe leisure time!

APPENDIX A.
THE CONSOLE BCF-19 (BCF-191) ASSEMBLING.

1. Install the windscreen 1(see Fig.A1, Fig.A2) onto the console 2.
 For this:

- hinge out the overhead console part;
- align the holes in the windscreen with the holes in the console overhead part;
- fix the windscreen by means of the bolts 3 (M6x25), polyethylene washers 4 and 5, washers 6, arrester washers 7 and nuts 8 (M6) from the complete set. First install two front bolts and then two side bolts. After installing please tighten all the nuts.

2.Set the handrail to the regular position (see Fig.A1).
 Align the hole in bearing 9 with the hole in the console body 2 and fix the handrail 10 from the inner side of the console body 2 with the help of the bolt 11 (M8x50) and washer 12 (8x24) (see Fig.A3). Put arrester washer under bolt's head for better fixing. Then tighten all three bolts, including the one lower.

3.Replace the console overhead part. Fix the overhead part by means of the washers and nuts.

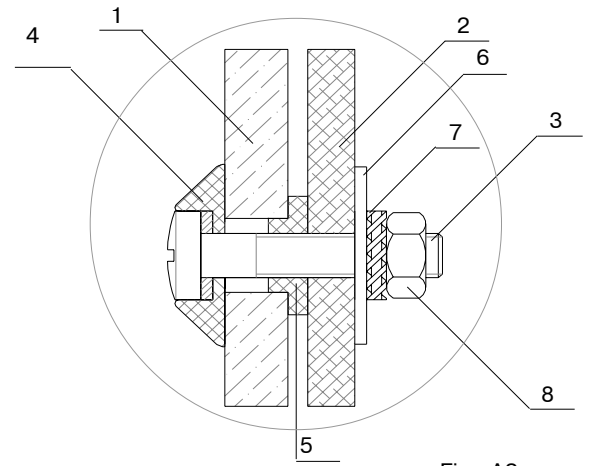


Fig. A2

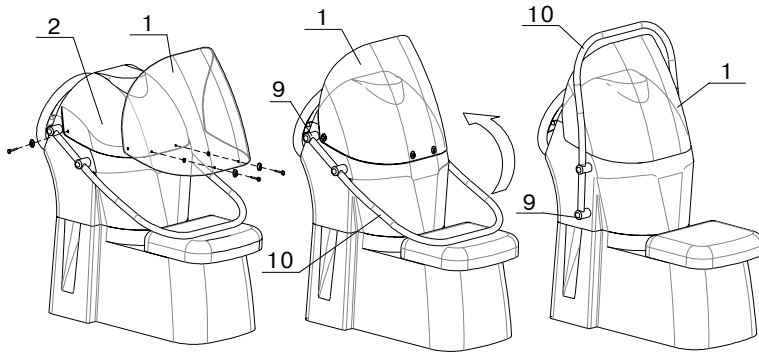


Fig. A1

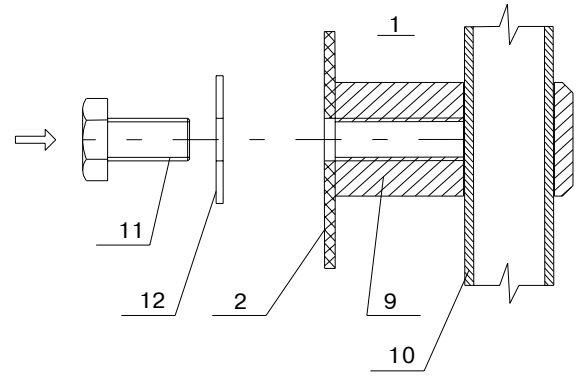


Fig. A3

APPENDIX B.

THE ASSEMBLY ORDER OF THE CONSOLE BCF-21.

1. Take off bow part of the seat from the console (see. Fig B1). The bow seat is fixed by the press-button and the "bur".
2. Turn off four nuts M8 (with washers and arrester washers) and take off the upper part of the console body.
3. Install windglass 4 on the upper part of the console body 1 with the help of bolts 5 (M6x40), polyethylene washers 6 and 7, washers 8, arrester washers 9 and nuts 10 (M6) (See Fig.B2,B3). Tighten all the nuts.
4. Turn the handrail to the vertical position (See Fig.B4). Align the holes in the handrail bearings 11 (see. Fig.B5) with the holes in the console body (upper part) 2, fix the handrail 3 from the inner part with the help of bolts 12 M8x30 (pipe bearing) and M8x50 (end bearing), washers 15 (8x24) and arrester washers 16. Tighten all three bolts.
5. Put the base part of the console on the deck of the boat. See the recommendation for console installation (see page 6 of this manual). Fix the console with the help of bolts 14 (M8x30), arrester washers 16, washers 15 (8x24) from the complete set. Tighten all the bolts.

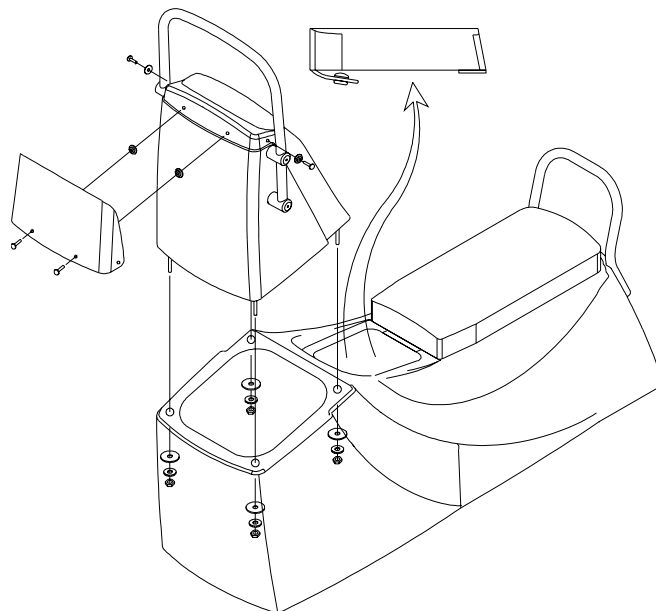


Fig. B1

Attention ! For installation of consoles SPORT, equipped with steering system, fuel tank and other options, see page 14 of this manual.

6. Install the upper part of the console 2 on the base part 1. (see. Fig.B1). Fix the upper part of the console with the help of nuts M8, washers 8x24, arrester washers (see point.2). Tighten all nuts.
7. Put bow part of the seat 6 on the console. Fix the bow seat by the press-button and the "bur".

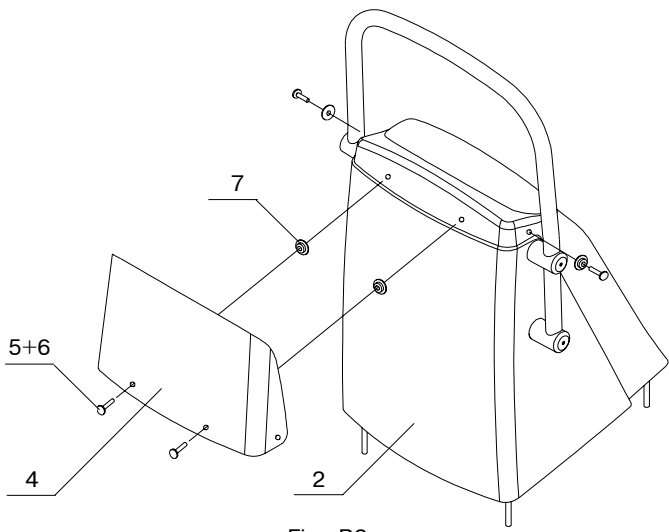


Fig. B2

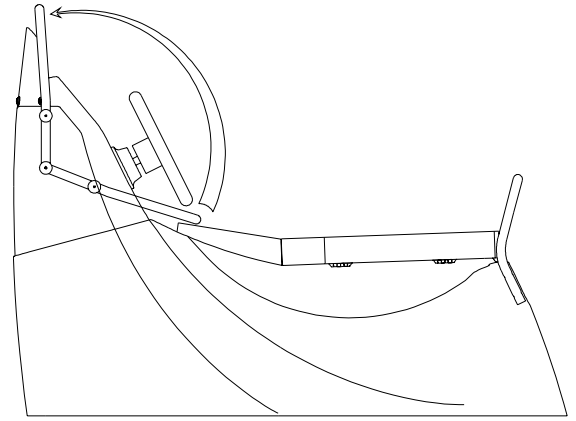


Fig. B4

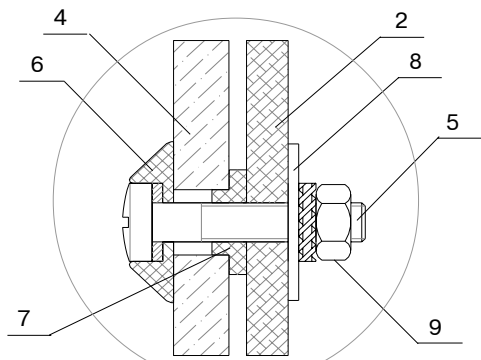


Fig. B3

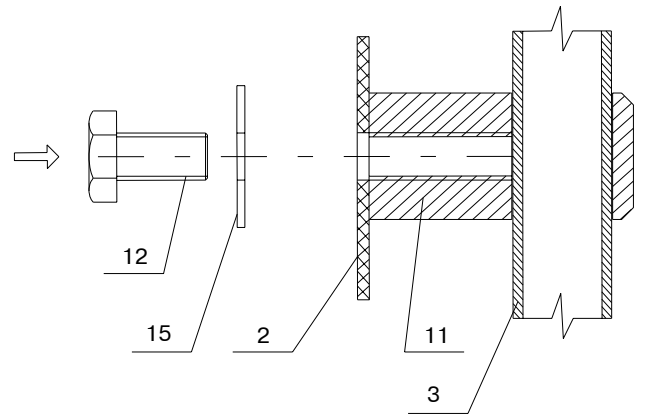
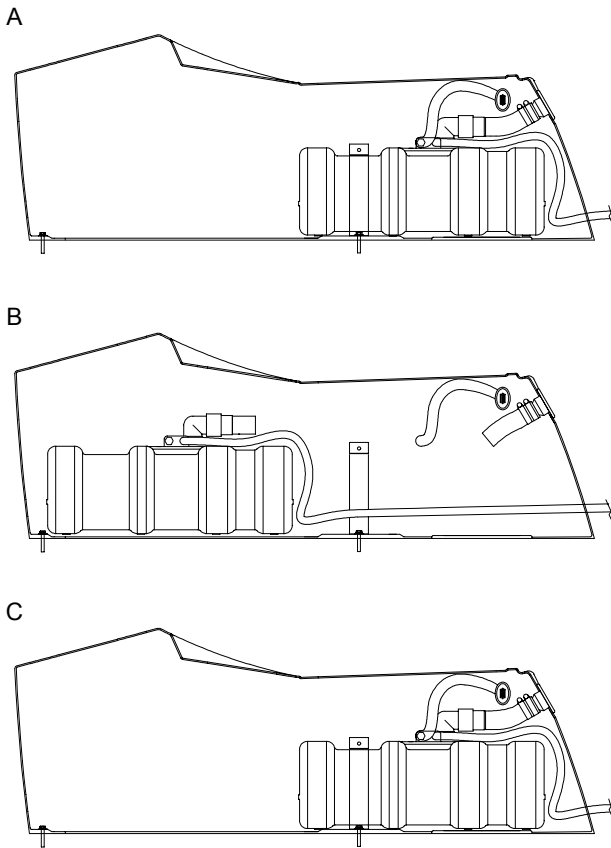


Fig. B5

APPENDIX B (continuation).

THE ASSEMBLY ORDER AND INSTALLATION OF THE CONSOLE BCF-21 EQUIPPED WITH FUEL SYSTEM.



1-3. See Pg.12 and Fig.B1, B2, B3.

4. See. Pg.12 and Fig.B4 and B5.

5. Put the console (the base part) on the deck. See the recommendations of this manual (See Pg.6).

5.1. Take out a storage battery box from the console. Align the holes in the bow part of the console bottom with the corresponding holes in the deck of your boat (Fig.B6A). Fix the console with the help of TWO bolts 14 (M8x30), arrester washers 16 and washers 15 (8x24) from the complete set. Tighten all the bolts.

5.2. Hing out rear part of console seat. Move fuel tank forward (Fig.B6B). Align the holes in the rear part of the console bottom with the corresponding holes in the deck. Fix the console and the fuel tank holdfast clamps (simultaneously) to the deck with the help of bolts 14 (M8x30), arrester washers 16 and washers 15 (8x24) from the complete set. Tighten all the bolts.

5.3. Return fuel tank in regular position (Fig.B6C). Fix the fuel tank with the help of the fuel tank holdfast clamps. Install drain and fuel filling hoses on the corresponding pipes of the fuel tank. Check up fastening electric sockets. Tighten all hose clips.

6-7. See. Pg.12.

8. Hing down rear part of console seat. Close lever lock of the seat.

Fig. B6

APPENDIX C.
THE ASSEMBLY ORDER OF THE CONSOLE BCF-20.

In order to assemble the console perform the next operations (Fig. C1):

- take off the upper part 2 with seat;
- align the holes in the windscreen 3 with the holes in the console body 1;
- fix the windscreen by means of the bolts M6x35, polyethylene washers, arrester washers and nuts M6 from the complete set;
- install the console upper part 2 with seat on the console body (Fig. C2).

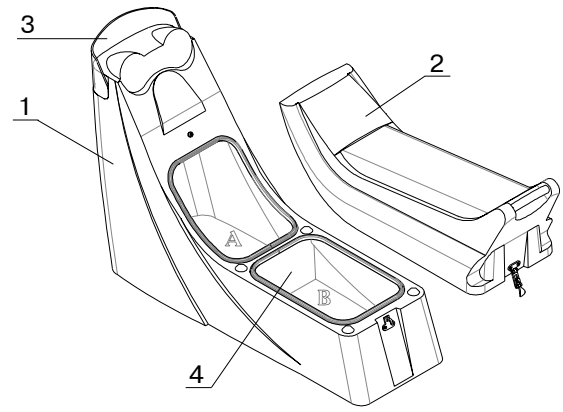


Fig. C1

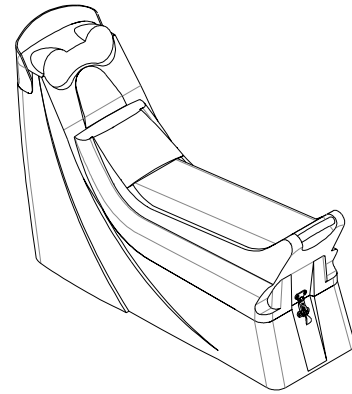
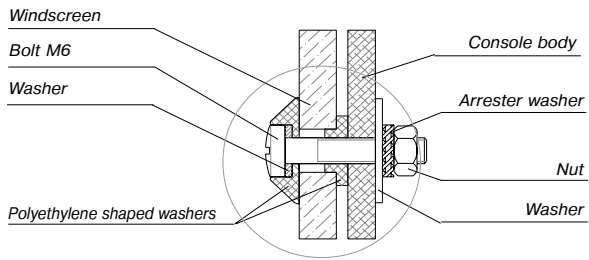


Fig. C2

APPENDIX D.

ASSEMBLY AND MOUNTING OF STAINLESS STEEL ARC .

1. Unscrew 2 bolts M8 with washers (pos.1 Fig.D1) and 4 screw with washers (pos.2 Fig.D1) from transom platform of your boat.
 2. Bore out 4 holes where shear screw (pos.2 Fig.D1) were installed with drill 7mm diameter for further installation of bolts M6.
 3. Assemble arch (Fig.D2) as follows:
 - 3.1 connect terminals of electrical cable (pos.2 Fig.D2a) of left and right racks of the arch;
 - 3.2 connect left rack of the arch (pos.3 Fig.D2a) with right rack of the arch (pos.4 Fig.D2a);
 - 3.3 align holes in racks with holes in inserts (pos.5 Fig.D2a) so that the distance between right and left supports of the arch (pos.6 Fig.D2a) were:
 - for boats F400, F450 – 800mm (Fig.D2b);
 - for boats F500 – 940mm (Fig.D2c);
 - 3.4 fix arch rack via upper platform (pos.7 Fig.D2a) with the help of bolts M6x40 with washer 6x12 and nuts M6 (pos.8 Fig.D2a).
 4. Set the arc onto transom platform. Previously pull the electrical cable clamps, outgoing from the right rack (Pos.9), (Fig. D4), through the hole, 12 mm in diameter, in the right stern plate beading. Fix the arc with the help of two bolts M8x25, two arrester washers 8 (Pos.10), (Fig. D3, D4), four bolts M6x40, four washers 6x24, four self-locking nuts M6 (Pos.11), (Fig. D3, D4).
- (WARNING!** When inserting bolts make sure not to damage electrical cable inside arch.)

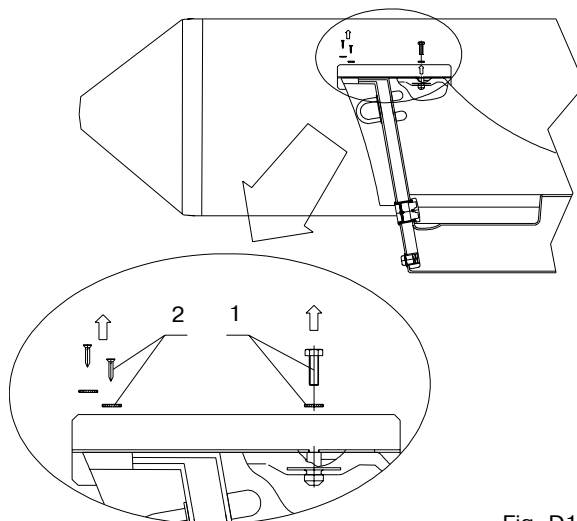


Fig. D1

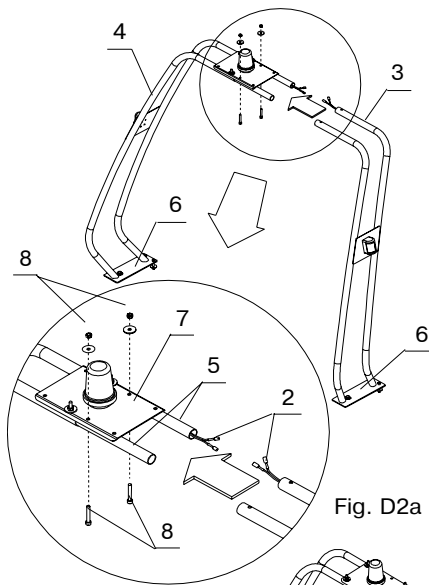


Fig. D2a

F400L,
F450L

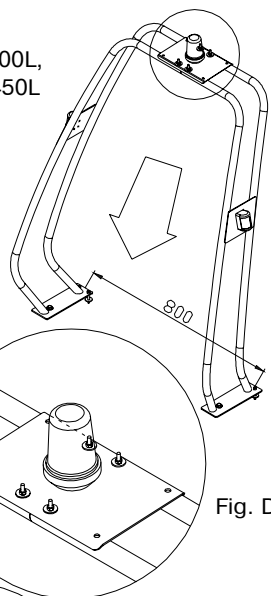


Fig. D2b

F500L

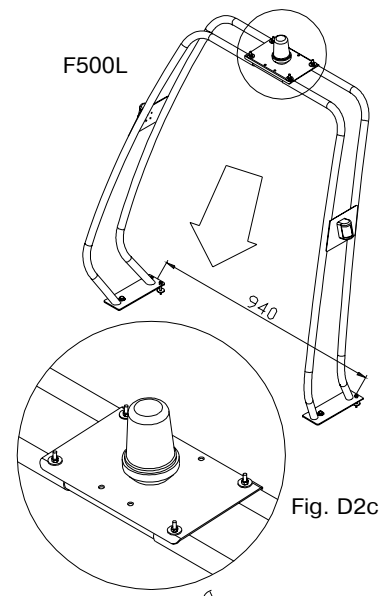


Fig. D2c

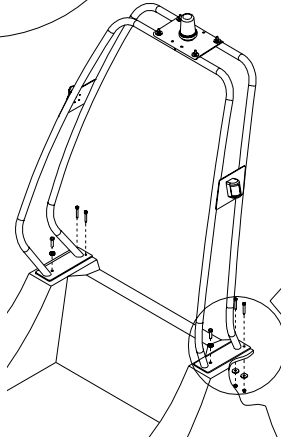


Fig. D3

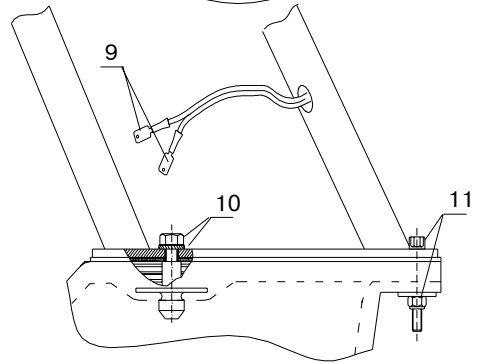


Fig. D4

APPENDIX E.

Care & Maintenance of your Sunbrella® Fabric.

If soft seats and cushions of your BRIG boat are made from Sunbrella® fabric, please read this instruction for the proper care of fabric.

Sunbrella® fabrics are made from solution-dyed acrylic fibres specifically designed for outdoor use. These air-permeable fabrics are chemically treated during manufacture. The treated fabric is more resistant to water, soiling (watermarks, dirt resulting from pollution or oily substances) and to the formation of mildew.

Over time, the effectiveness of the treatment diminishes. We therefore recommend that you clean and re-treat your fabric regularly in order to keep it in excellent condition and to make it last much longer.

Cleaning

- 1) When dry, brush the fabric (using a clothes brush or similar) in order to remove as much dirt as possible.
- 2) Spray the fabric with a jet of water, to moisten it.
- 3) Prepare a cleaning solution as follows:
 - For a standard clean: add 100ml (or more) of mild soap to 4 litres of hot water (maximum 40°C)
 - For the best possible result: use **303 Fabric Cleaner**
- 4) Brush the fabric using a soft brush (clothes brush or similar) and leave the solution to act for a few seconds.
 - **To remove marks:** use the cleaner on its own, or just slightly diluted with water. Spray onto the mark until the fabric is wet.
Work the product in using a soft brush. Wipe away the mark and any excess cleaner with a wet cloth.
- 5) Rinse thoroughly with clean water.
- 6) Leave the fabric to dry in the open air.

Note: to avoid any deterioration of the fabric, we recommend you never expose it to sources of heat (e.g. hair dryers) or never use the following when cleaning: detergent, hot water (above 40°C), high-pressure cleaners.

Protection

303 High Tech Fabric Guard restores your fabric's original water-resistant and dirt-repellent properties. It stops leaks, prevents the formation of marks and mildew and protects the fabric against the harmful effects of UV rays.

Re-treating with **303 High Tech Fabric Guard** is easy, quick and produces long-lasting results.

- Use only on completely dry, new or recently cleaned fabric.
- Spray **303 High Tech Fabric Guard** until the fabric is moist. **Do not overspray.**
- Leave the fabric to dry completely before using it or putting it away.

If you have the time, give your fabric a second treatment. Leave it to dry completely in the open air between treatments.

Coverage: use 500 ml for every 7 to 10 square metres treated.

Note: the use of silicone-based waterproofing products is not recommended. They are not compatible and there is therefore a risk of marks appearing once exposed to the air. Waterproofing products designed for use with wood and brickwork are also not recommended.

Read the instructions and recommendations on the label before using

303 HighTech Fabric Guard and **303 Fabric Cleaner.**

BRIG
inflatable boats

MODEL

SERIAL No.

Date of manufacture

Quality inspection stamp